

## Appendix 5B

### Mining exploration entity or oil and gas exploration entity quarterly cash flow report

Name of entity

REY RESOURCES LIMITED

ABN

84 108 003 890

Quarter ended ("current quarter")

31 December 2024

Consolidated statement of cash flows	Current quarter \$A'000	Year to date (6 months) \$A'000
<b>1. Cash flows from operating activities</b>		
1.1 Receipts from customers		
1.2 Payments for		
(a) exploration & evaluation	(145)	(145)
(b) development	-	-
(c) production	-	-
(d) staff costs	-	-
(e) administration and corporate costs	(193)	(346)
1.3 Dividends received (see note 3)	-	-
1.4 Interest received	-	-
1.5 Interest and other costs of finance paid	(575)	(1,112)
1.6 Income taxes paid	-	-
1.7 Government grants and tax incentives	-	-
1.8 Other (provide details if material)	-	-
<b>1.9 Net cash from / (used in) operating activities</b>	<b>(913)</b>	<b>(1,603)</b>
<b>2. Cash flows from investing activities</b>		
2.1 Payments to acquire or for:		
(a) entities	-	-
(b) tenements	-	-
(c) property, plant and equipment	-	-
(d) exploration & evaluation	(17)	(249)
(e) investments	-	-
(f) other non-current assets	-	-

## Mining exploration entity or oil and gas exploration entity quarterly cash flow report

Consolidated statement of cash flows		Current quarter \$A'000	Year to date (6 months) \$A'000
2.2	Proceeds from the disposal of:		
	(a) entities	-	-
	(b) tenements	350	400
	(c) property, plant and equipment	-	-
	(d) investments	-	-
	(e) other non-current assets	-	-
2.3	Cash flows from loans to other entities	-	-
2.4	Dividends received (see note 3)	-	-
2.5	Other (provide details if material)	-	-
<b>2.6</b>	<b>Net cash from / (used in) investing activities</b>	<b>333</b>	<b>151</b>

<b>3.</b>	<b>Cash flows from financing activities</b>		
3.1	Proceeds from issues of equity securities (excluding convertible debt securities)	-	-
3.2	Proceeds from issue of convertible debt securities	-	-
3.3	Proceeds from exercise of options	-	-
3.4	Transaction costs related to issues of equity securities or convertible debt securities	-	-
3.5	Proceeds from borrowings	460	1,460
3.6	Repayment of borrowings	-	-
3.7	Transaction costs related to loans and borrowings	-	-
3.8	Dividends paid	-	-
3.9	Other (Share Buy Back)	-	(1)
<b>3.10</b>	<b>Net cash from / (used in) financing activities</b>	<b>460</b>	<b>1,459</b>

<b>4.</b>	<b>Net increase / (decrease) in cash and cash equivalents for the period</b>		
4.1	Cash and cash equivalents at beginning of period	396	269
4.2	Net cash from / (used in) operating activities (item 1.9 above)	(913)	(1,603)
4.3	Net cash from / (used in) investing activities (item 2.6 above)	333	151
4.4	Net cash from / (used in) financing activities (item 3.10 above)	460	1,459

## Mining exploration entity or oil and gas exploration entity quarterly cash flow report

<b>Consolidated statement of cash flows</b>		<b>Current quarter \$A'000</b>	<b>Year to date (6 months) \$A'000</b>
4.5	Effect of movement in exchange rates on cash held	-	-
<b>4.6</b>	<b>Cash and cash equivalents at end of period</b>	<b>276</b>	<b>276</b>

<b>5.</b>	<b>Reconciliation of cash and cash equivalents</b> at the end of the quarter (as shown in the consolidated statement of cash flows) to the related items in the accounts	<b>Current quarter \$A'000</b>	<b>Previous quarter \$A'000</b>
5.1	Bank balances	276	396
5.2	Call deposits	-	-
5.3	Bank overdrafts	-	-
5.4	Other (provide details)	-	-
<b>5.5</b>	<b>Cash and cash equivalents at end of quarter (should equal item 4.6 above)</b>	<b>276</b>	<b>396</b>

<b>6.</b>	<b>Payments to related parties of the entity and their associates</b>	<b>Current quarter \$A'000</b>
6.1	Aggregate amount of payments to related parties and their associates included in item 1	67 *
6.2	Aggregate amount of payments to related parties and their associates included in item 2	-

*Note: if any amounts are shown in items 6.1 or 6.2, your quarterly activity report must include a description of, and an explanation for, such payments.*

\* Consulting fees (\$28,350), Director fees (\$39,026)

## Mining exploration entity or oil and gas exploration entity quarterly cash flow report

<b>7. Financing facilities</b>	<b>Total facility amount at quarter end \$A'000</b>	<b>Amount drawn at quarter end \$A'000</b>
<i>Note: the term "facility" includes all forms of financing arrangements available to the entity. Add notes as necessary for an understanding of the sources of finance available to the entity.</i>		
7.1 Loan facilities	27,000	19,910
7.2 Credit standby arrangements	-	-
7.3 Other (please specify)	-	-
<b>7.4 Total financing facilities</b>	<b>27,000</b>	<b>19,910</b>
<b>7.5 Unused financing facilities available at quarter end</b>		<b>7,090</b>
7.6 Include in the box below a description of each facility above, including the lender, interest rate, maturity date and whether it is secured or unsecured. If any additional financing facilities have been entered into or are proposed to be entered into after quarter end, include a note providing details of those facilities as well.		
The total facility amount comprises:		
(i) <u>ASF Loan</u> - an unsecured loan facility of \$2 million from ASF Group Limited, a substantial shareholder of the Company. Interest accruing at the rate of 12% per annum, maturing on 30 April 2026 ( <b>ASF Loan Facility</b> ); and		
(ii) <u>Liu Loan</u> - an unsecured loan facility of \$25 million from Wanyan Liu, a substantial shareholder of the Company. Interest accruing at the rate of 12% per annum, maturing on 30 April 2026 ( <b>Liu Loan Facility</b> ).		
As at the quarter ended 31 December 2024, the Company had remaining available facilities of \$5.09 million under Liu Loan Facility and \$2 million under ASF Loan Facility.		

<b>8. Estimated cash available for future operating activities</b>	<b>\$A'000</b>
8.1 Net cash from / (used in) operating activities (item 1.9)	(913)
8.2 (Payments for exploration & evaluation classified as investing activities) (item 2.1(d))	(17)
8.3 Total relevant outgoings (item 8.1 + item 8.2)	(930)
8.4 Cash and cash equivalents at quarter end (item 4.6)	276
8.5 Unused finance facilities available at quarter end (item 7.5)	7,090
8.6 Total available funding (item 8.4 + item 8.5)	7,366
<b>8.7 Estimated quarters of funding available (item 8.6 divided by item 8.3)</b>	<b>7.92</b>
<i>Note: if the entity has reported positive relevant outgoings (ie a net cash inflow) in item 8.3, answer item 8.7 as "N/A". Otherwise, a figure for the estimated quarters of funding available must be included in item 8.7.</i>	
8.8 If item 8.7 is less than 2 quarters, please provide answers to the following questions:	
8.8.1 Does the entity expect that it will continue to have the current level of net operating cash flows for the time being and, if not, why not?	
Answer:	N/A

## Mining exploration entity or oil and gas exploration entity quarterly cash flow report

8.8.2 Has the entity taken any steps, or does it propose to take any steps, to raise further cash to fund its operations and, if so, what are those steps and how likely does it believe that they will be successful?

Answer: N/A

8.8.3 Does the entity expect to be able to continue its operations and to meet its business objectives and, if so, on what basis?

Answer: N/A

Note: where item 8.7 is less than 2 quarters, all of questions 8.8.1, 8.8.2 and 8.8.3 above must be answered.

## Compliance statement

- 1 This statement has been prepared in accordance with accounting standards and policies which comply with Listing Rule 19.11A.
- 2 This statement gives a true and fair view of the matters disclosed.

30 January 2025

Date: .....

By the Board of Rey Resources Limited

Authorised by: .....  
(Name of body or officer authorising release – see note 4)

## Notes

1. This quarterly cash flow report and the accompanying activity report provide a basis for informing the market about the entity's activities for the past quarter, how they have been financed and the effect this has had on its cash position. An entity that wishes to disclose additional information over and above the minimum required under the Listing Rules is encouraged to do so.
2. If this quarterly cash flow report has been prepared in accordance with Australian Accounting Standards, the definitions in, and provisions of, *AASB 6: Exploration for and Evaluation of Mineral Resources* and *AASB 107: Statement of Cash Flows* apply to this report. If this quarterly cash flow report has been prepared in accordance with other accounting standards agreed by ASX pursuant to Listing Rule 19.11A, the corresponding equivalent standards apply to this report.
3. Dividends received may be classified either as cash flows from operating activities or cash flows from investing activities, depending on the accounting policy of the entity.
4. If this report has been authorised for release to the market by your board of directors, you can insert here: "By the board". If it has been authorised for release to the market by a committee of your board of directors, you can insert here: "By the [name of board committee – eg Audit and Risk Committee]". If it has been authorised for release to the market by a disclosure committee, you can insert here: "By the Disclosure Committee".
5. If this report has been authorised for release to the market by your board of directors and you wish to hold yourself out as complying with recommendation 4.2 of the ASX Corporate Governance Council's *Corporate Governance Principles and Recommendations*, the board should have received a declaration from its CEO and CFO that, in their opinion, the financial records of the entity have been properly maintained, that this report complies with the appropriate accounting standards and gives a true and fair view of the cash flows of the entity, and that their opinion has been formed on the basis of a sound system of risk management and internal control which is operating effectively.

# December 2024 Quarterly Activities Report

Authorised by:  
Board of Rey Resources Limited

Registered Office: Suite 2, 3B Macquarie Street, Sydney NSW 2000

For further information, contact:  
Wei Jin, Managing Director  
Phone: +61 2 9251 9088  
Email: [info@reyresources.com](mailto:info@reyresources.com)  
Web: [www.reyresources.com](http://www.reyresources.com)



Rey Resources Limited (ASX: REY) (“Rey” or “the Company”) is focused on developing its oil and gas interests in the Canning and Perth Basins, Western Australia.

## 1. Oil and Gas

### 1.1 Fitzroy Blocks (EP457 and EP458)

The Fitzroy Blocks are located in the Canning Basin in the northwest of Western Australia (refer Figure 1 below).

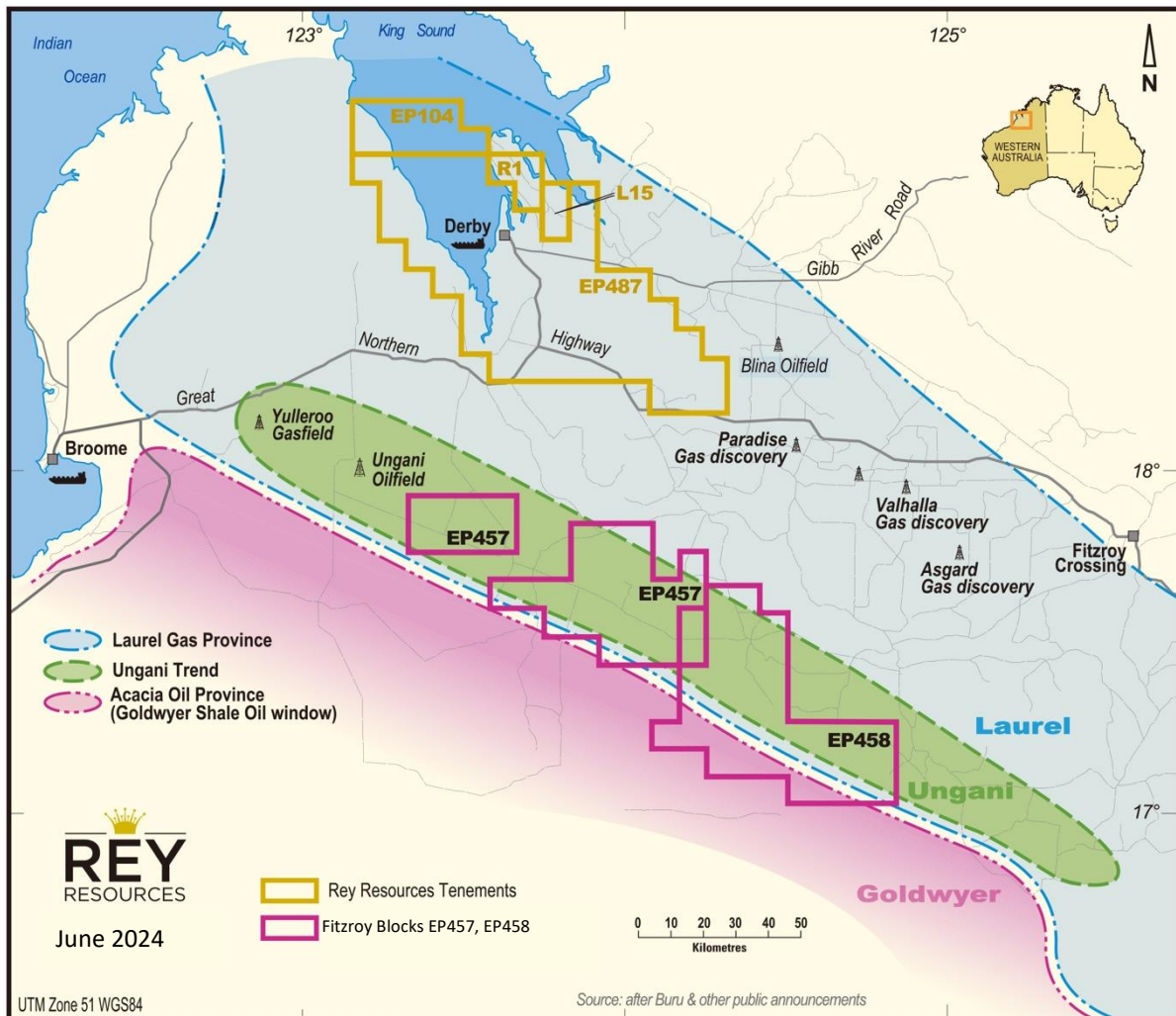


Figure 1: The three major prospective trends relative to Fitzroy Blocks EP457 and EP458 and Derby Block EP487

During the quarter Rey decided to fully surrender EP458 due to no drilling prospective after internal technical review. The surrender application has been lodged to the department in October 2024.

The OCM was held between the EP457 JV parties at the end of November. The Operator presented the future work program plan during the meeting, which Rey supported. Detailed commitment work is under discussion between the parties.

### 1.2 Derby Block (EP487)

The Company currently holds a 100% interest in petroleum exploration permit EP487, the Derby Block, via its 100% owned subsidiaries Rey Lennard Shelf Pty Ltd and Rey Derby Block Pty Ltd.

The Derby Block is considered to be predominantly a Wet Laurel Basin Centred Gas (BCG) play which is regionally extensive throughout the Canning Basin (refer to Figures 2 below) and has been the subject of exploration elsewhere in the Canning Basin by other parties in 2015, resulting in encouraging flow tests by Buru at Valhalla and Asgard.

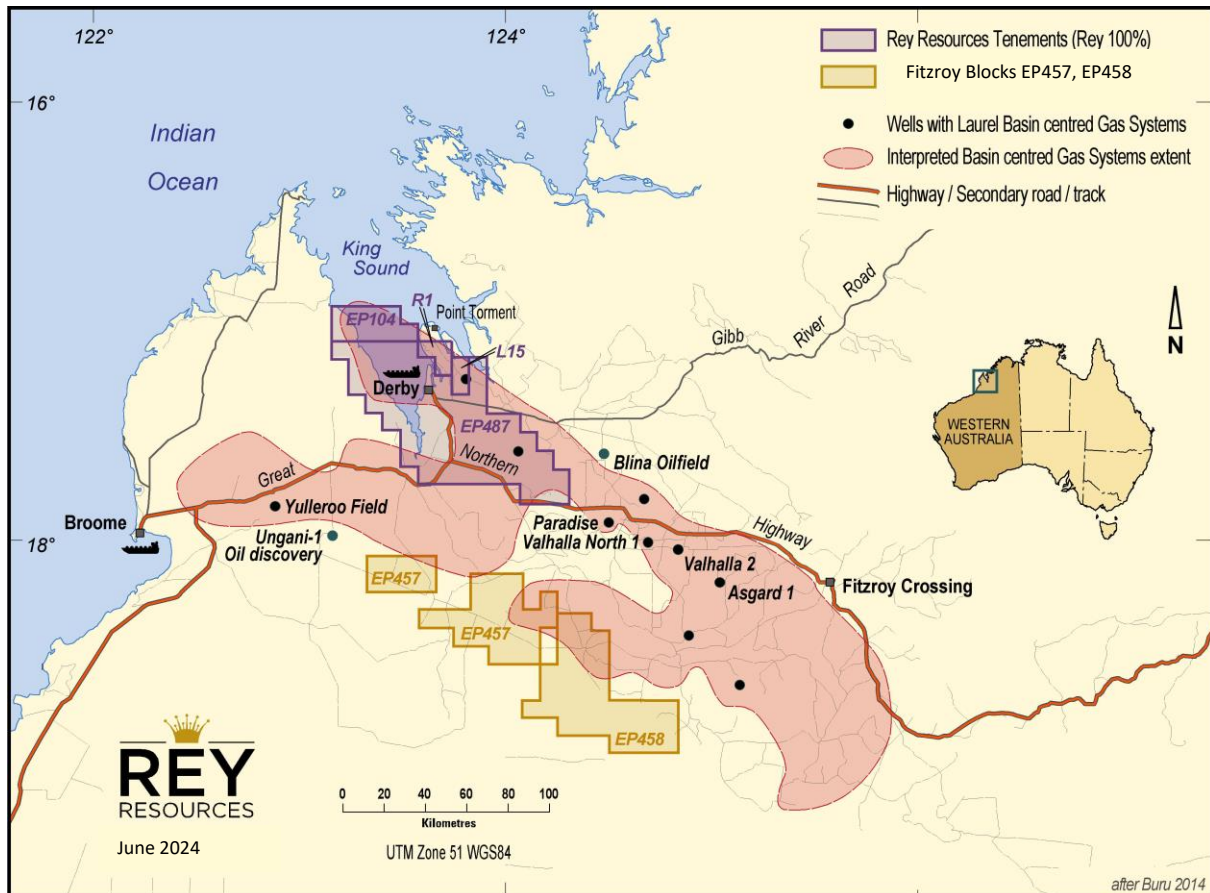


Figure 2: Interpreted extent of the Laurel Basin gas system in relation to Rey's petroleum interests (after Buru and others).

During this quarter, Rey has continued to prepare for the 3D seismic survey, including adjusting the working plan and seeking proper contractor. Rey is also maintaining contact with Native Title Holder and landowners for land access.

### 1.3 Lennard Shelf Blocks (EP104, R1 and L15)

Guoxin completed the 100% share transfer of Gulliver Production which holds 100% interest in R1, L15 and EP104 from Rey. However, transition of R1 will subject to certain conditions which has not been fully satisfied. Upon the completion of the transaction, Rey will remain 10% well head royalty against any resources produced from the 3 blocks

By the end of the quarter, several tasks were conducted including the preparation of the L15 reproduction plan, and the update of the Well Management Plan for Stokes Bay 1. Guoxin plans to commence flow testing at West Kora 1 in the first half year of 2025.



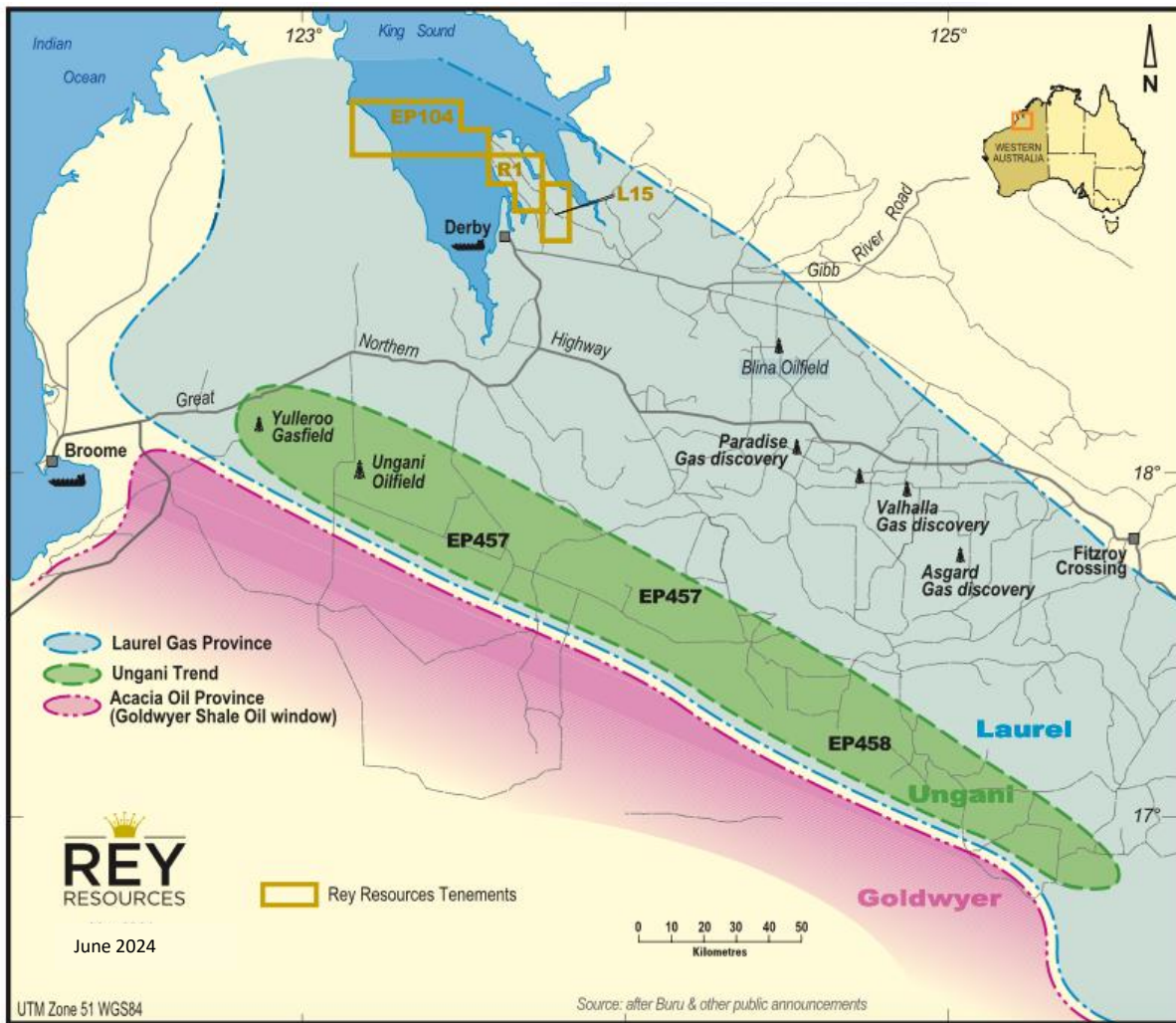


Figure 3: Location of Lennard Shelf Blocks.

## 2. Coal

The Duchess Paradise Coal Project (**DP Project**) is a proposed bituminous thermal coal operation located in the Canning Basin of Western Australia and is partly contiguous with the Fitzroy Blocks.

The first hearing of the arbitration was held in December 2024. Rey has delivered the revised Protocol to the Native Title holder for comments.

## 3. Corporate

During the quarter, the Company received \$350,000, being the balance of consideration for the disposal of Gulliver Production, and completed the transfer of shares to Guoxin which is now holding 100% interest in Gulliver Production.

As at the quarter ended 31 December 2024, the Company maintained a cash balance of \$276,000 and available loan facilities from Ms Wanyan Liu and ASF Group Limited of \$5.09 million and \$2 million respectively.

As required pursuant to section 6 of the Company's Appendix 5B, the Company paid approximately \$67,000 to related parties during the quarter, of which \$28,350 were consulting fees and \$39,026 were Director fees.

## Corporate Directory

### Board of Directors

Min Yang	Non-Executive Chairman
Wei Jin	Managing Director
Yan Zhao	Executive Director
Geoff Baker	Non-Executive Director
Stanley Fu	Non-Executive Director

### Company Secretary

William Kuan

### Capital Structure

Rey Resources is listed on the Australian Securities Exchange (ASX: REY) and had 211,560,904 ordinary shares on issue as at 31 December 2024.

### Share Registry

Boardroom Pty Limited  
Level 8, 210 George Street  
Sydney NSW 2000 Australia  
Tel: +61 2 9290 9600  
Fax: +61 2 9279 0664

### Registered Office

Suite 2, 3B Macquarie Street  
Sydney NSW 2000  
Tel: +61 2 9251 9088  
info@reyresources.com  
[www.reyresources.com](http://www.reyresources.com)

## Tenement Tenure Status (as at 31 December 2024)

Tenure ID <sup>1</sup>	Tenure Type	Holder (wholly owned Rey subsidiary company)	Ownership % beginning quarter	Ownership % end quarter
<b>Mineral Licences</b>				
E04/1519	Exploration Licence	Blackfin Pty Ltd	100	100
E04/1770	Exploration Licence	Blackfin Pty Ltd	100	100
M04/0453	Mining Lease Application	Blackfin Pty Ltd	100	100
<b>Petroleum Permits</b>				
EP457	Exploration Permit	Rey Oil and Gas Pty Ltd	40	40
EP458	Exploration Permit	Rey Oil and Gas Pty Ltd	100	100
EP487 <sup>2</sup>	Exploration Permit	Rey Lennard Shelf Pty Ltd ("RLS")	50	50
EP487 <sup>2</sup>	Exploration Permit	Rey Derby Block Pty Ltd ("RDB")	50	50
L15 <sup>3</sup>	Production Licence	Gulliver Productions	100	-
R1 <sup>3</sup>	Retention Licence	Gulliver Productions	100	-
EP104 <sup>3</sup>	Exploration Permit	Gulliver Productions	100	-

<sup>1</sup> All tenements are located in Western Australia.

<sup>2</sup> Royalties attaching to EP487: RLS may, at its election, on the grant of a production licence on EP487, either: grant Backreef Oil Pty Ltd a 1% royalty on sales proceeds from future production from its interest in EP487; or pay \$2 million to Backreef.

<sup>3</sup> Completion of the disposal of Gulliver Productions Pty Ltd which holds 100% interest in L15, R1 and EP104 occurred in October 2024.